



Proximus Smart Tank

Tank up at the right time

Do you spend a lot of time planning and calculating how much fuel you need to deliver at a certain place and time? Smart Tank makes life easier: this solution measures the level of each tank daily. And notifies you or your customer when it's time to tank up. Unexpected deliveries? They won't disrupt your planning anymore.

Deliver exactly on time

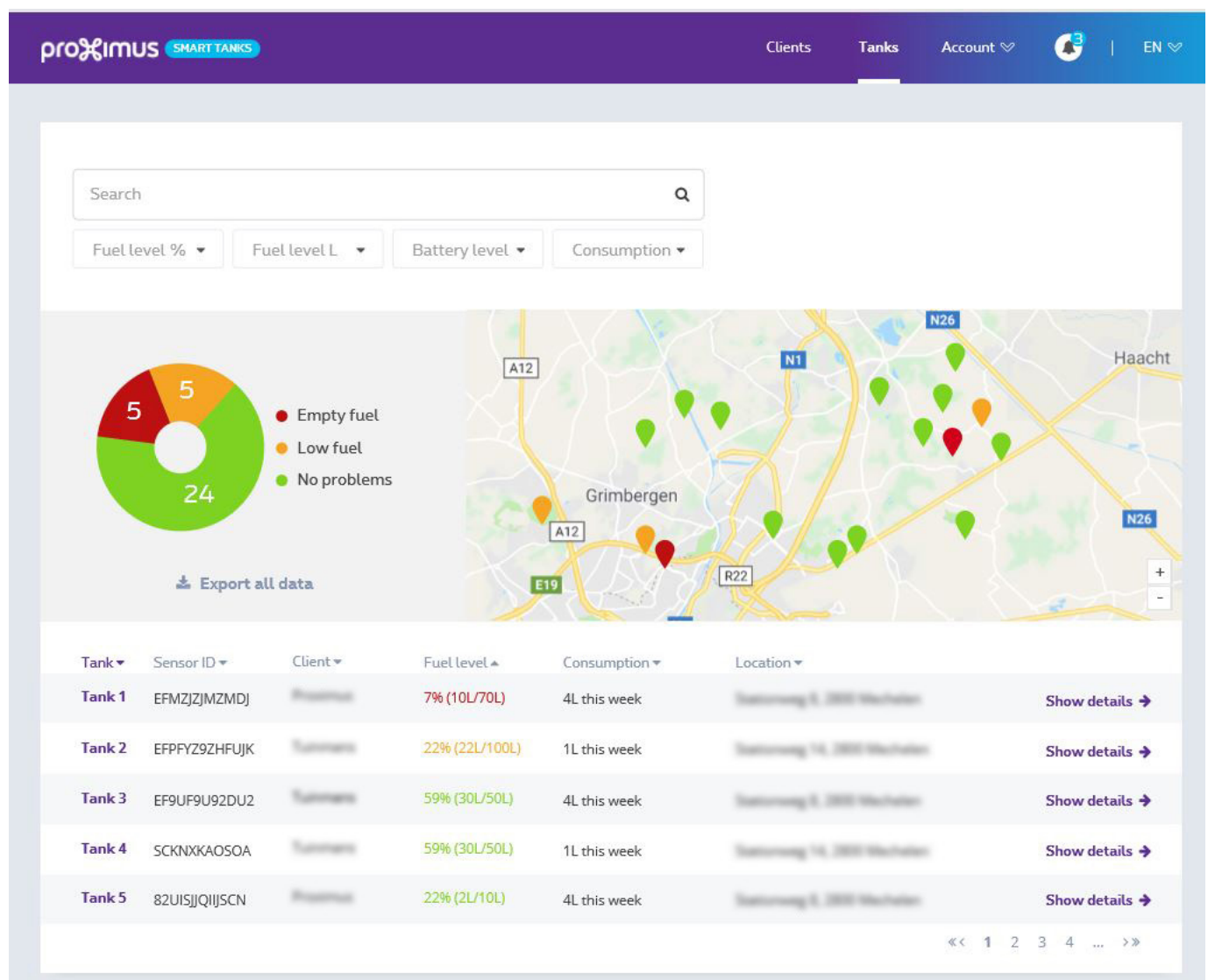
How much fuel is there in my customers' tanks? With Smart Tank, you know exactly how much, for every tank, on a daily basis. What if the level is too low? You will immediately receive a message via e-mail, text or your app. You can notify your customers on time or deliver before they even know they need anything. Your customers will never run out of fuel again, and unexpected deliveries will be a thing of the past.

Reduce transport costs

In what order should you fill up the tanks? Smart Tank helps you map out the best route. No more unnecessary extra mileage. You'll make a lot of savings on transport costs and time.

Stockpile the right quantity

How much should you stockpile? View the online history, combine trends with new delivery times and quantities, and you should know how much to order from your supplier. You're prepared for everything, even during peak periods.



Smart Tank is:

- **Effortless.** Attach the sensor with the dipstick to the tank.
- **Automatic.** All the data from the sensor is automatically sent to your server via the LoRa® network – the data is secure and only accessible to you.
- **Clear view.** The online dashboard gives a real-time view of the fuel levels in the tanks and a complete history.
- **Versatile.** The supplied APIs inject the Smart Tank data into your systems. That way, you can optimize all your processes from A to Z.

With **Smart Tank**, you keep an eye on the fuel level of your customers' tanks, so you can refuel in time or notify your customers in advance.

Each sensor works with long-life batteries and is connected to the Proximus IoT network using LoRa® technology. LoRa® is a low power, wide area network: it consumes very little energy and has very large coverage. More information about IoT networks is available [here](#):

[More information about IoT networks](#)



More info?



Surf to www.proximus.be/iot or contact us via www.proximus.be/contactpage