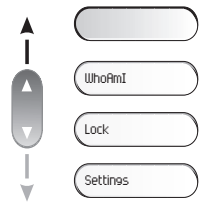




Navigation



Up-down navigator: used to navigate around the home page, through the menus or in a text zone when entering characters .

The home page consists of:

- Information on the status of the set (set locked, call forward, etc.)
- Date and time
- Set programming and configuration features

OK key: used to validate your choices and options while programming or configuring .

Back/Exit key: to return to previous menu (short press) or return to first screen (long press). You can also use this key to correct a character you entered.

Feature keys and programmable keys

Guide key: Use to obtain information on the pre-programmed keys or to access the set programming or configuration.

Phone book key: Phone book key to access your personal phone book (short press) or to make a call by name (long press or press twice).

Pre-programmed feature keys and programmable key
Lit when the feature associated with the key is activated.
The 6-key block consists of:

- two line keys,
- one "immediate forwarding or cancel call-forward" key,
- one "conference" key,
- one "manual hold" key,
- one "transfer" key.

Audio keys

END key: to terminate a call.

Handsfree/Speaker Key: to make or answer a call without lifting the receiver (Alcatel-Lucent IP Touch 4008/4018 Phone).

- lit in handsfree mode or headset mode (short press).
- flashing in speaker mode (long press).

Intercom/Mute key:

- During a call: press this key so that your party cannot hear you.
- Terminal idle: press this key so that you can automatically answer a call without lifting the receiver.

To adjust the speaker or receiver volume up or down

Function keys

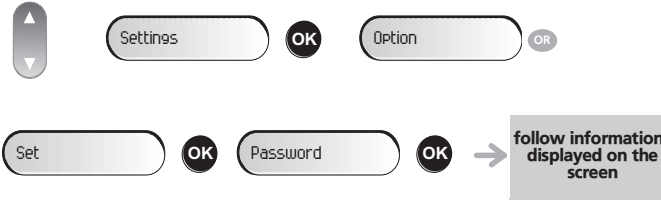
Messaging key to access various mail services
If the key flashes, a new voice message or a new text message has been received.

"Redial" key: To access the "Redial" feature.


! To avoid accidentally damaging the set telephone line connector, make sure you position the cord correctly in the compartment intended for this purpose.

Customize your terminal

Modifying your personal code

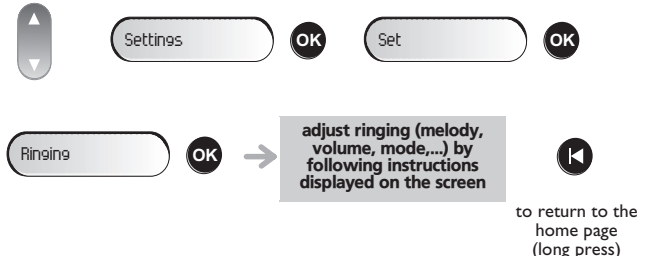


Lock / unlock your telephone

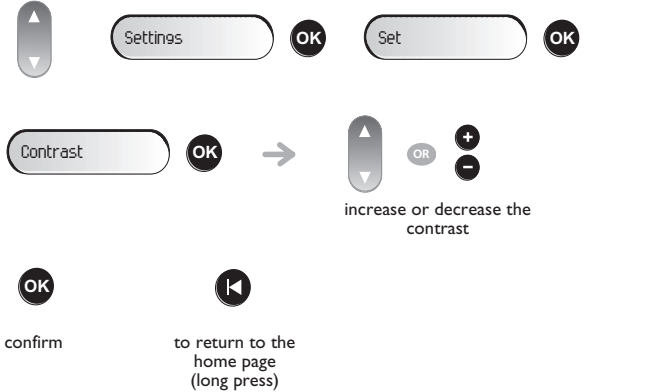


depending the displayed informations, enter your password or confirm *

Adjusting the audio features




Adjusting screen brightness

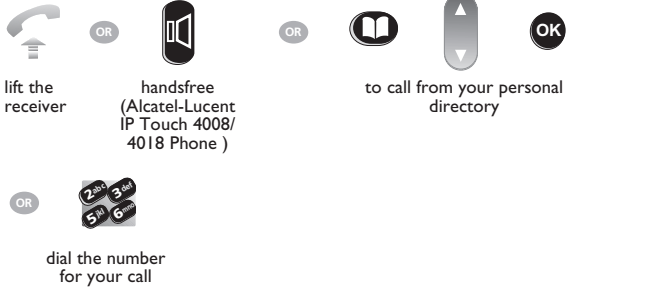


Using your telephone

Identifying the terminal you are on

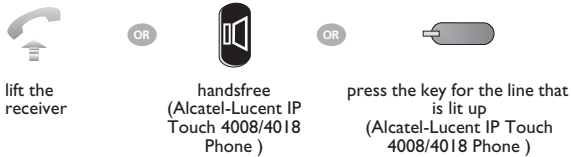


Making a call



To make an external call, dial the outside line access code (9) before dialing your party's number.

Answering a call



Redial



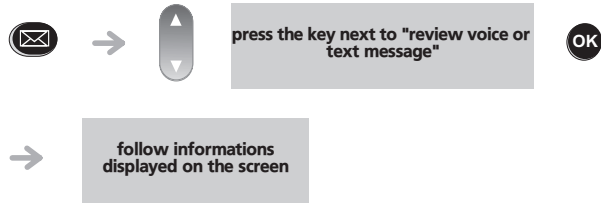
Making a callback request to a busy number



Voice message service

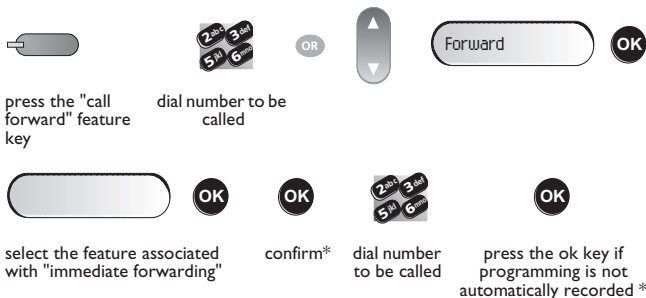
Reviewing your voice mailbox

If the key flashes, a new voice message or a new text message has been received.

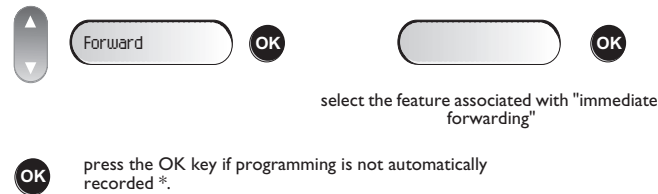


divert your calls to another number

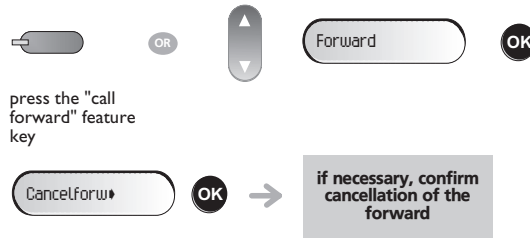
Forwarding your calls to another number



Immediate forwarding to your voice mailbox



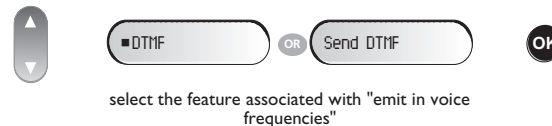
When you return, cancel all forwarding



During a call

Sending DTMF signals

During a conversation you sometimes have to send DTMF signals, such as with a voice server, an automated attendant or a remotely consulted answering machine. The feature is automatically cancelled when you hang up.



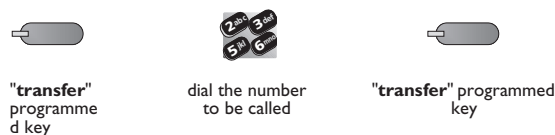
Calling a second person during a call

During a call, you can call a second person (consultation call):



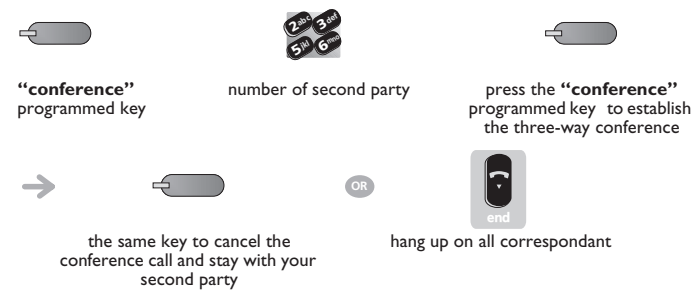
Transferring a call

During a call, you may transfer the call to another number.



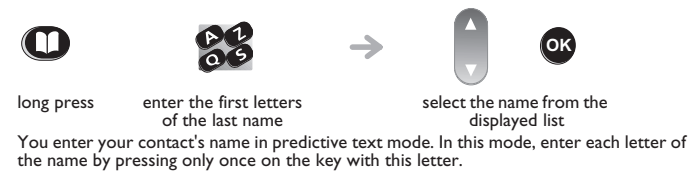
Three-way conference

During a call, a second call is on hold.



Directory

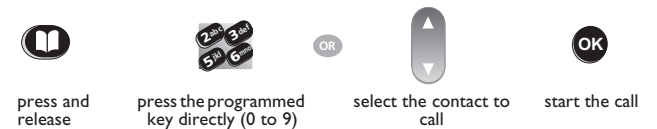
Using dial by name*



Program the keys in the personal phone book



Make a call using the personal phone book



Compliance

This document describes the services available on telephones in the IP Touch range connected to an Alcatel-Lucent OmniPCX Office or Alcatel-Lucent OmniPCX Enterprise Communication Server system. For more information, please consult the User Guide for your Alcatel-Lucent IP Touch 4008/4018 Phone (IP set) or 4019 Digital Phone (digital set). Contact your installer.

Warning: never place your telephone in contact with water. To clean your telephone, you may however use a damp soft cloth. Never use solvents (trichlorethylene, acetone, etc.) which may damage the plastic parts of your telephone. Never spray it with cleaning products. Earpiece may retain magnetic objects.

The wording is not contractual and may be subject to change. Some features of your telephone are controlled by a software key and the configuration of the unit.

This equipment has been tested and found to comply with the limits for a Class B digital device, pursuant to part 15 of the FCC Rules. This Class B digital apparatus complies with Canadian ICES-003. These limits are designed to provide reasonable protection against harmful interference in a residential installation. This equipment generates, uses and can radiate radio frequency energy and, if not installed and used in accordance with the instructions, may cause harmful interference to radio communications. If this equipment does cause harmful interference, please contact your installer.



Collection of these products at the end of their product life must be done selectively. Alcatel, Lucent, Alcatel-Lucent and the Alcatel-Lucent logo are trademarks of Alcatel-Lucent. All other trademarks are the property of their respective owners. The information presented is subject to change without notice. Alcatel-Lucent assumes no responsibility for inaccuracies contained herein. Copyright © 2007 Alcatel-Lucent. All rights reserved.

User Guide.

* Depending on your telephone system, contact your installer or consult the appropriate



3GV19008USAB010727